

General Instructions for SA Curve Pocket Template



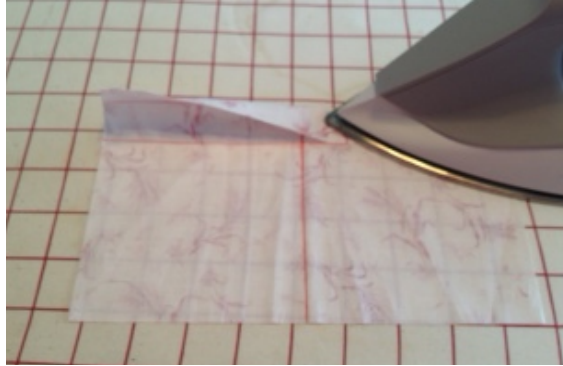
1. Cut rectangle of fabric for pocket or large enough for multiple pockets.
 - Length = Finished length of pocket + 2" for double fold hem + 1/2".
 - Width = Finished pocket width + 1" -- Multiple by # of pockets



General Instructions for SA Curve Pocket Template

2. Finish top edge of pocket.

- Turn 1" to wrong side of fabric along top edge of pocket & press.



- Turn under an additional 1" and press.



- Edge stitch to hem pocket.



General Instructions for SA Curve Pocket Template

3. If cutting multiple pockets, cut into individual pockets.



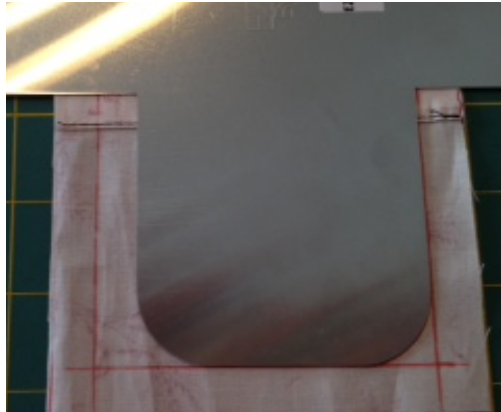
4. Draw fold line $\frac{1}{2}$ ' from sides on wrong sides of pocket.



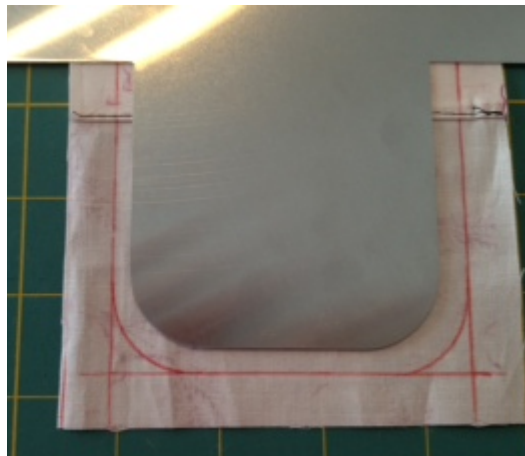
General Instructions for SA Curve Pocket Template

Curved Bottom Pocket

1. Draw fold line for bottom of pocket $\frac{1}{2}$ " from bottom edge.

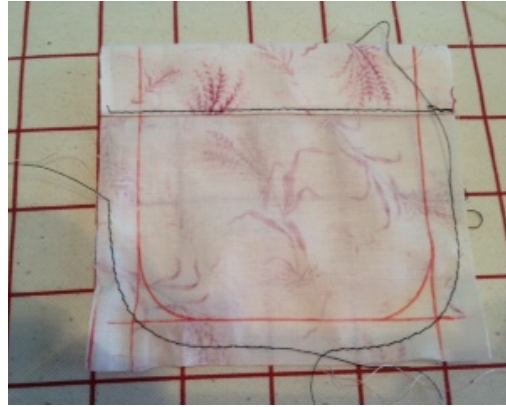


2. Trace pocket curved corners onto wrong side of pocket.

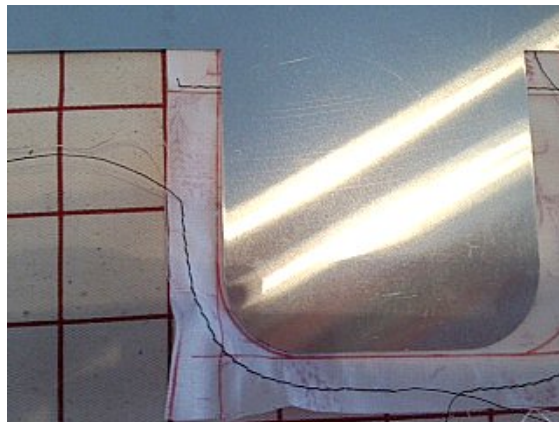


General Instructions for SA Curve Pocket Template

3. Select a basting stitch and stitch $\frac{1}{4}$ " from edge of pocket around the curved corners. Stitch each corner separately.



4. Place template onto curved corners on wrong side of pocket along the marked fold lines.



5. Pull on the thread tails of the basting stitch to pull excess fabric evenly over the pocket template and press.

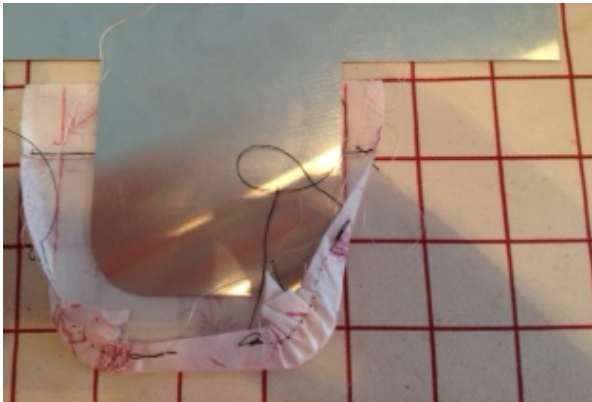


General Instructions for SA Curve Pocket Template

6. Flip template over and repeat to press opposite curved corner.



7. Press straight edges over straight sections of template.



8. Remove template and give the pocket a good press.

9. Trim seam allowance.



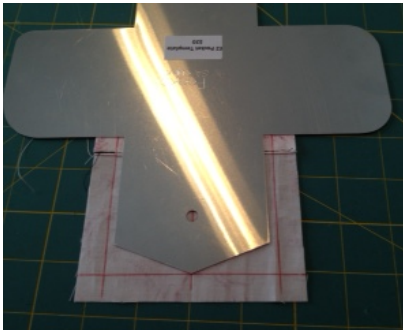
General Instructions for SA Curve Pocket Template

V-Bottom Pocket

1. Draw fold line $\frac{1}{2}$ ' from sides on wrong sides of pocket.
2. Draw a vertical line down the center of the pocket.
3. Draw fold line for bottom of pocket $\frac{1}{2}$ " from bottom edge.

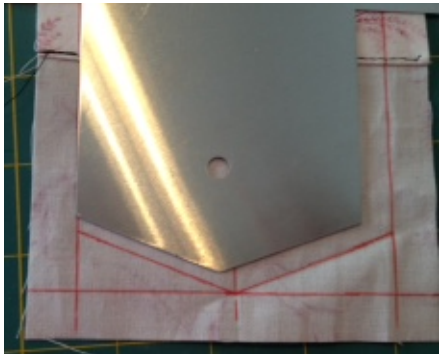
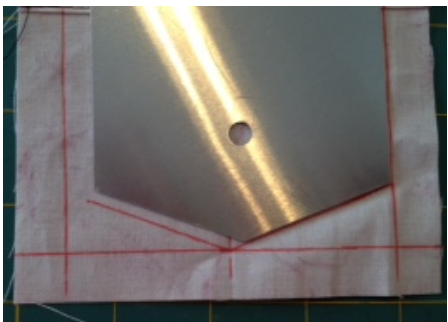
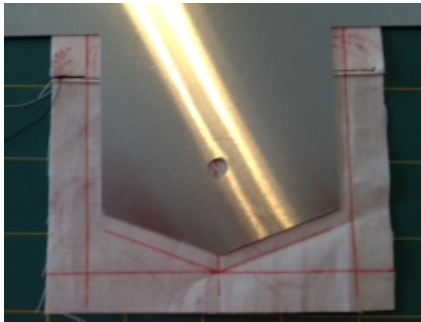


4. Place "V" of template on the "V-Bottom" mark keeping the template centered vertically.

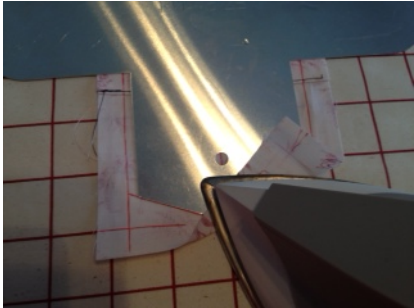
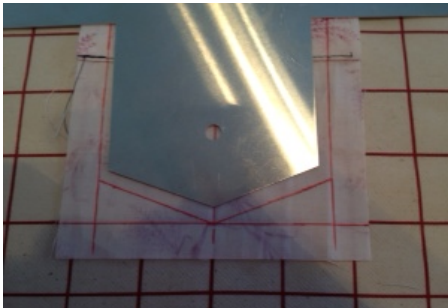


General Instructions for SA Curve Pocket Template

5. Trace the "V-Bottom" of the pocket. Extend the fold line to the sides of the pocket.



6. Fold the seam allowance over the pocket template and press the "V-Bottom".

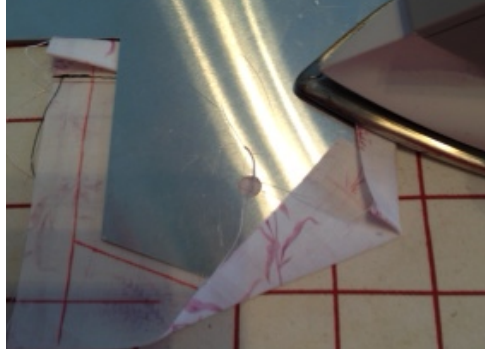


7. Move the template along the fold line until the side fold lines are in alignment with the template.

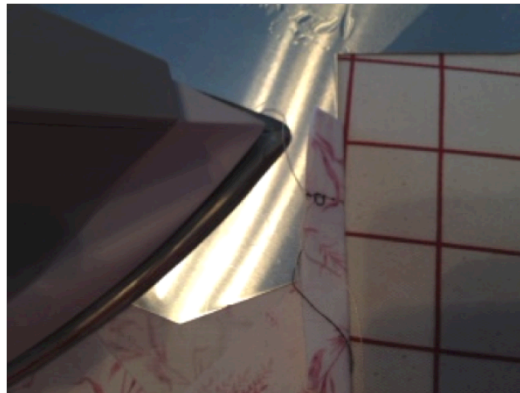


General Instructions for SA Curve Pocket Template

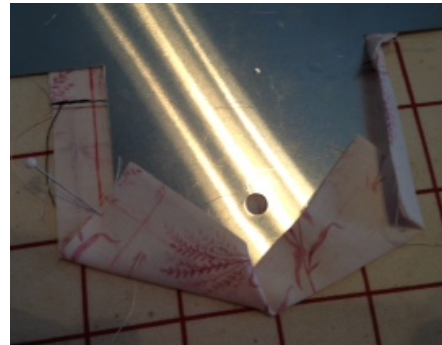
8. Press the seam allowance of the pocket side over the template and complete pressing the bottom of the pocket over the template.



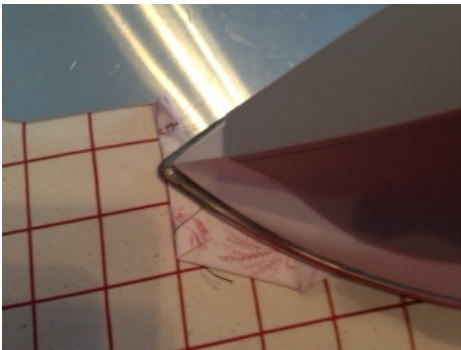
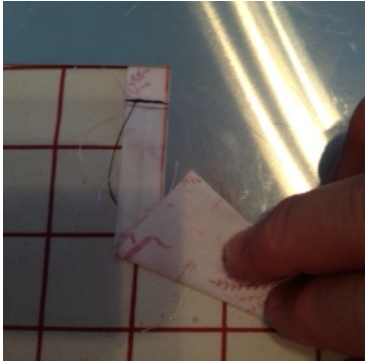
9. Move the pocket template vertically along the side of the pocket and press over the template.



10. Repeat steps to press the opposite corner.



General Instructions for SA Curve Pocket Template



11. Remove template and give the pocket a good press.

12. Trim the seam allowance.

