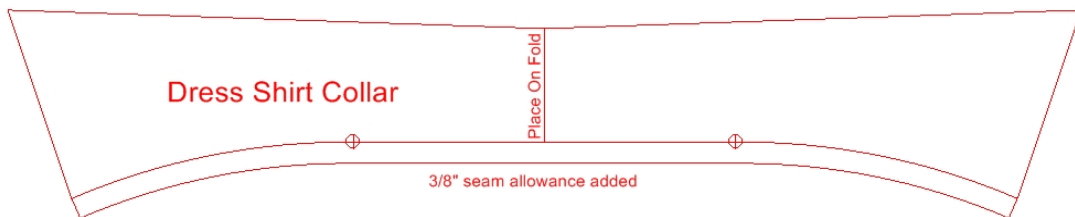


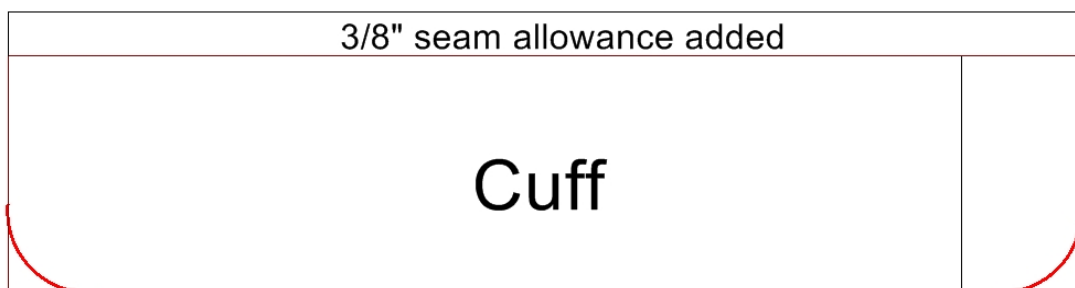
# SA Curve Cuff & Collar Template Instructions

The cuff and collar are constructed using the same method. Pictures of both have been included in these instructions.

1. Make a duplicate copy of the collar/cuff pattern by tracing along the stitching lines of the pattern.
2. Trace a full collar pattern along the stitching lines if the collar pattern is cut on the fold.

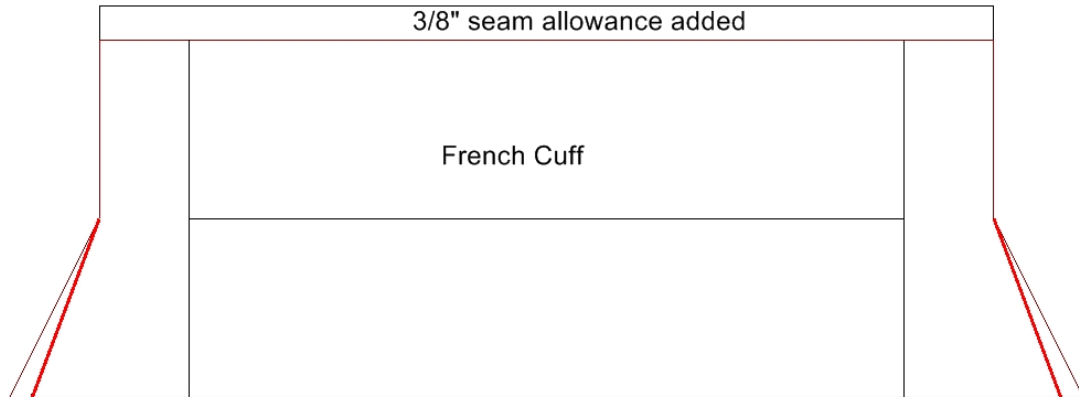


3. Adjust the pattern to fit the template by tracing the template curve or angles onto the pattern, connecting the outline of the template to the previously traced stitching lines of the collar/cuff.



## SA Curve Cuff & Collar Template Instructions

4. Draw the cutting line at the neck/sleeve edge of the collar/cuff using your preferred seam allowance



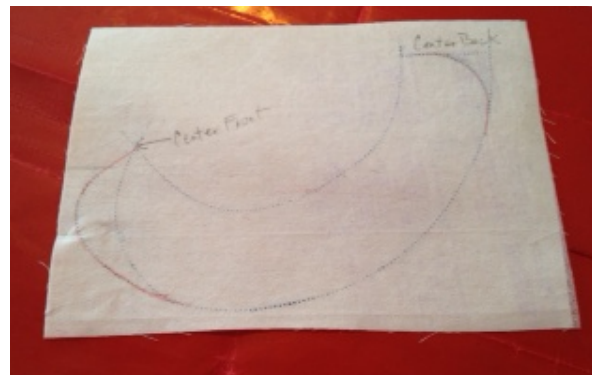
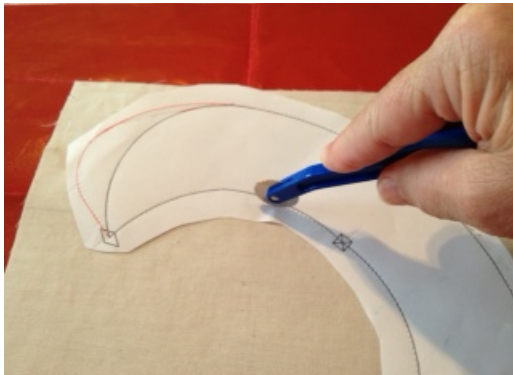
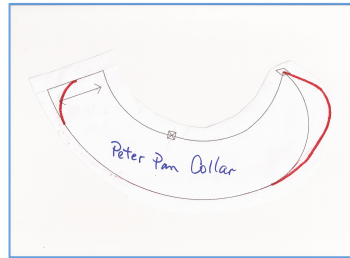
5. Cut 2 (4) rectangles of fabric and 1 (2) rectangles of interfacing large enough for the collar pattern piece. (Double number for cuffs or 2-piece collar)
6. Apply interfacing to wrong side of 1 (2) fabric pieces.
7. Trace the stitching lines of the collar/cuff pattern onto the interfaced side of the fabric pieces.



## SA Curve Cuff & Collar Template Instructions

8. (Alternate option is to trace the original pattern stitching line onto the interfaced fabric then trace the stitching line angle or curve from the template onto the interfaced side of the fabric.)

Peter Pan Collar with template curves traced in red



## SA Curve Cuff & Collar Template Instructions

9. Check the template against the pattern that has been traced onto the interfacing.



10. Place one of the interfaced collar/cuff pieces right sides together with a collar/cuff without interfacing.

11. Stitch along the stitching line using the template angle or curve tracing.



## SA Curve Cuff & Collar Template Instructions

- Grade and clip the seam allowance. On the pointed corners of the collar/cuff place a small amount of seam sealant such as Fray Block or Fray Check and let dry before trimming the seam allowance. This is just a little extra insurance for those closely trimmed corners when you turn the collar/cuff right side out.

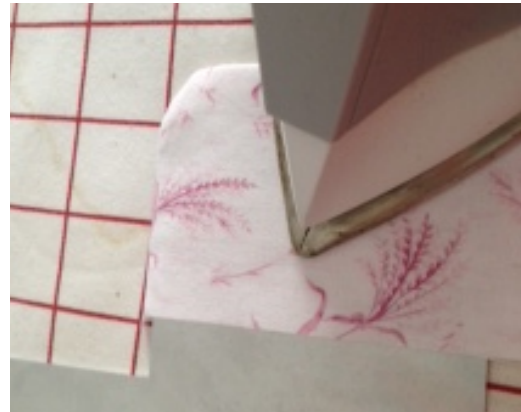


- Turn right side out. You might try using the template as a turning aid.



## SA Curve Cuff & Collar Template Instructions

14. Insert template into the corner/curve to use as a pressing aid. You will have better results if you make sure that the inside seam allowances are on the back side of the template when you press.



15. Finished cuff.

